

TRAF3 regulates the effector function of regulatory T cells and humoral immune responses

Jae-Hoon Chang,^{1,3} Hongbo Hu,¹ Jin Jin,¹ Nahum Puebla-Osorio,¹ Yichuan Xiao,¹ Brian E. Gilbert,⁴ Robert Brink,⁵ Stephen E. Ullrich,^{1,2} and Shao-Cong Sun^{1,2}

¹Department of Immunology, The University of Texas MD Anderson Cancer Center, Houston, TX 77030

²The University of Texas Graduate School of Biomedical Sciences at Houston, Houston, TX 77030

³College of Pharmacy, Yeungnam University, Gyeongsan 712-749, South Korea

⁴Department of Molecular Virology and Microbiology, Baylor College of Medicine, Houston, TX 77030

⁵Immunology Research Program, Garvan Institute of Medical Research, Darlinghurst, New South Wales 2010, Australia

Regulatory T cells (T_{reg} cells) control different aspects of immune responses, but how the effector functions of T_{reg} cells are regulated is incompletely understood. Here we identified TNF receptor-associated factor 3 (TRAF3) as a regulator of T_{reg} cell function. T_{reg} cell-specific ablation of TRAF3 impaired CD4 T cell homeostasis, characterized by an increase in the Th1 type of effector/memory T cells. Moreover, the ablation of TRAF3 in T_{reg} cells resulted in increased antigen-stimulated activation of follicular T helper cells (T_{FH} cells), coupled with heightened formation of germinal centers and production of high-affinity IgG antibodies. Although the loss of TRAF3 did not reduce the overall frequency of T_{reg} cells, it attenuated the antigen-stimulated production of follicular T_{reg} cells (T_{FR} cells). TRAF3 signaling in T_{reg} cells was required to maintain high level expression of inducible co-stimulator (ICOS), which in turn was required for T_{FR} cell generation and inhibition of antibody responses. These findings establish TRAF3 as a mediator of T_{reg} cell function in the regulation of antibody responses and suggest a role for TRAF3 in mediating ICOS expression in T_{reg} cells.

CORRESPONDENCE

Shao-Cong Sun:
ssun@mdanderson.org

Abbreviations used: APC, allophycocyanin; EMSA, electrophoretic mobility shift assay; GC, germinal center; ICOS, inducible co-stimulator; ICS, intracellular cytokine staining; NIK, NF- κ B-inducing kinase; NP, 4-hydroxy-3-nitrophenyl-acetyl; SRBC, sheep RBC; T_{FH} cell, follicular T helper cell; T_{FR} cell, follicular T_{reg} cell; TRAF, TNF receptor-associated factor.

Foxp3⁺ regulatory T cells (T_{reg} cells) form a major population of CD4⁺ immunosuppressive T cells that plays a pivotal role in maintaining peripheral immune tolerance and preventing autoimmune diseases (Sakaguchi et al., 2008). In addition, T_{reg} cells also restrain the immunity against foreign antigens and cancer. The development, maintenance, and function of T_{reg} cells are dependent on the master transcription factor Foxp3 and factors that regulate Foxp3 expression and function (Josefowicz et al., 2012). Genetic deficiencies in these core regulatory factors typically lead to impaired self-tolerance and homeostasis of T cells, coupled with severe autoimmune disorders. Strong evidence suggests that T_{reg} cells represent a diverse cell population, comprising functionally distinct subsets that control different types of immune responses (Campbell and Koch, 2011; Josefowicz et al., 2012). The molecular mechanism that regulates

the differentiation and function of the diverse T_{reg} cells subsets remains poorly understood.

Recent studies have identified a specific subset of T_{reg} cells, the follicular T_{reg} cells (T_{FR} cells), which are localized in the B cell follicles and specialized for the control of germinal center (GC) reactions (Chung et al., 2011; Linterman et al., 2011; Wollenberg et al., 2011). Formation of GCs is essential for various events of a T-dependent humoral immune response, such as antibody class switching, somatic hypermutation, and affinity maturation (Ramiscal and Vinuesa, 2013). The GC reactions depend on follicular T helper cells (T_{FH} cells), a subset of CD4⁺ T effector cells which provide essential help to cognate B cells for their activation and differentiation in GCs (Linterman et al., 2012).

© 2014 Chang et al. This article is distributed under the terms of an Attribution-Noncommercial-Share Alike-No Mirror Sites license for the first six months after the publication date (see <http://www.rupress.org/terms>). After six months it is available under a Creative Commons License (Attribution-Noncommercial-Share Alike 3.0 Unported license, as described at <http://creativecommons.org/licenses/by-nc-sa/3.0/>).

J.-H. Chang and H. Hu contributed equally to this paper.

The T_{FR} cells resemble the T_{FH} cells in that they express high levels of the chemokine receptor CXCR5, the inducible co-stimulator (ICOS), and the inhibitory receptor PD-1 (Linterman et al., 2012). However, in contrast to T_{FH} cells, the T_{FR} cells express Foxp3 and possess immunosuppressive function. It appears that the T_{FR} cells are generated from CXCR5⁺ T_{reg} cells, instead of naive T cells, in response to T cell-dependent antigens. The T_{FR} cell production requires the transcription factor Bcl-6 and is negatively regulated by the inhibitory receptor PD-1 (Chung et al., 2011; Linterman et al., 2011; Sage et al., 2013). However, the intracellular signaling events involved in the induction of T_{FR} cells are largely unknown.

The TNF receptor (TNFR)-associated factors (TRAFs) form a family of signaling adaptors that mediate signal transduction from both the TNFRs and various other immune receptors (Ha et al., 2009). Among the TRAF family members, TRAF3 is particularly complex in signaling functions, which differ in the context of different receptors in different cell types (Hildebrand et al., 2011). In B cells, TRAF3 functions as a negative regulator of the noncanonical NF- κ B signaling pathway and B cell survival. TRAF3 physically interacts with the NF- κ B-inducing kinase (NIK) and mediates continuous degradation of this central component of the noncanonical NF- κ B pathway (Liao et al., 2004). Thus, loss of TRAF3 causes constitutive activation of noncanonical NF- κ B, coupled with B cell hyperplasia and aberrant production of antibodies (He et al., 2006; Xie et al., 2007; Gardam et al., 2008). Similar abnormalities have been observed in B cell conditional transgenic mice expressing a stable form of NIK that lacks the TRAF3-binding motif (NIK Δ T3; Sasaki et al., 2008). In contrast to its negative role in B cell homeostasis, TRAF3 has a positive role in mediating TCR signaling and T cell-dependent immune responses (Xie et al., 2011). Interestingly, the TRAF3 deficiency is associated with an increase in the frequency of T_{reg} cells, although the role of TRAF3 in regulating the homeostasis and function of T_{reg} cells remains unknown (Hildebrand et al., 2011; Xie et al., 2011).

In the present study, we directly examined the function of TRAF3 in T_{reg} cells by generating T_{reg} cell-specific TRAF3 KO (*Traf3^{Treg-KO}*) mice. We show that TRAF3 is dispensable for the homeostasis of the general population of T_{reg} cells. However, TRAF3 has a particularly important role in the regulation of T_{FR} cell generation and GC reactions. The T_{reg} cell-specific TRAF3 deficiency severely inhibited the antigen-stimulated production of T_{FR} cells, coupled with deregulated activation of T_{FH} cells and heightened GC reactions. Consequently, the *Traf3^{Treg-KO}* mice have elevated production of high-affinity antibodies of the IgG subtypes. Mechanistically, TRAF3 is required for maintaining the high-level expression of ICOS in T_{reg} cells. We provide evidence that ICOS deficiency compromises the induction of T_{FR} cells and the control of GC reactions. These findings shed light on the signaling mechanism that mediates T_{FR} cell induction and identify TRAF3 as a crucial factor involved in this specific process.

RESULTS

TRAF3 deficiency partially impaired the in vivo function of T_{reg} cells

To study the function of TRAF3 in T_{reg} cells, we generated T_{reg} -conditional TRAF3 KO mice by crossing the *Traf3*-floxed mice with Foxp3-Cre mice (Fig. 1 A). Ablation of TRAF3 did not reduce, but even moderately increased, the frequency of T_{reg} cells in the spleen (Fig. 1 B). To examine the effect of TRAF3 deficiency on the immunosuppressive function of T_{reg} cells, we performed in vitro suppression assays using T_{reg} cells purified from the spleen of WT and *Traf3^{Treg-KO}* mice. The WT and TRAF3-deficient T_{reg} cells had comparable efficiencies in suppressing the proliferation of naive T cells (Fig. 1 C), suggesting a dispensable role for TRAF3 in regulating the in vitro function of T_{reg} cells.

We next examined the in vivo function of T_{reg} cells using a well-defined adoptive transfer model, which involved co-transfer of CD45RB^{hi} naive CD4⁺ T cells with T_{reg} cells purified from the WT and *Traf3^{Treg-KO}* mice. As expected, adoptive transfer of CD45RB^{hi} naive T cells into *Rag1*-KO mice induced severe body weight loss of the recipient mice, coupled with massive expansion of the transferred T cells, and these pathological phenotypes were efficiently blocked when the naive T cells were cotransferred with WT T_{reg} cells (Fig. 1 D). Compared with the WT T_{reg} cells, the TRAF3-deficient T_{reg} cells exhibited a reduced ability to suppress the expansion and pathological activity of the naive T cells (Fig. 1, E and F). Although the mutant T_{reg} cells remained fully functional in inhibiting the production of Th17 cells from the cotransferred naive CD4⁺ T cells, their ability to suppress the generation of Th1 cells was partially impaired (Fig. 1 F). After the adoptive transfer, a lower number of TRAF3-deficient T_{reg} cells was recovered compared with that of the WT T_{reg} cells (Fig. 1 G), suggesting reduced expansion or survival of the mutant T_{reg} cells. Furthermore, they showed a reduced level of IL-10 production (Fig. 1 H). Collectively, these data suggest that T_{reg} cell-specific TRAF3 deficiency does not compromise the homeostasis or in vitro function of T_{reg} cells but partially impairs the in vivo functions of T_{reg} cells.

Altered CD4 T cell homeostasis in *Traf3^{Treg-KO}* mice

To assess the function of the TRAF3-deficient T_{reg} cells under nontransferred conditions, we examined the homeostasis of CD4⁺ T cells in peripheral lymphoid organs. The spleens and lymph nodes of the *Traf3^{Treg-KO}* mice contained an enhanced frequency of CD4⁺ T cells with memory-like markers (CD44^{hi}CD62L^{lo}; Fig. 2, A and B). Among the memory-like CD4⁺ T cells in the peripheral lymphoid organs, there was a significant increase in the frequency of IFN- γ -producing Th1 cells in the *Traf3^{Treg-KO}* mice, although the frequency of Th17 cells was generally low and not significantly different between the WT and mutant mice (Fig. 2 C).

T_{reg} cells play an important role in maintaining T cell homeostasis in the intestine, an organ with dynamic interactions between the immune system and microbiota (MacDonald et al., 2011). The T_{reg} cell-specific TRAF3 deficiency resulted

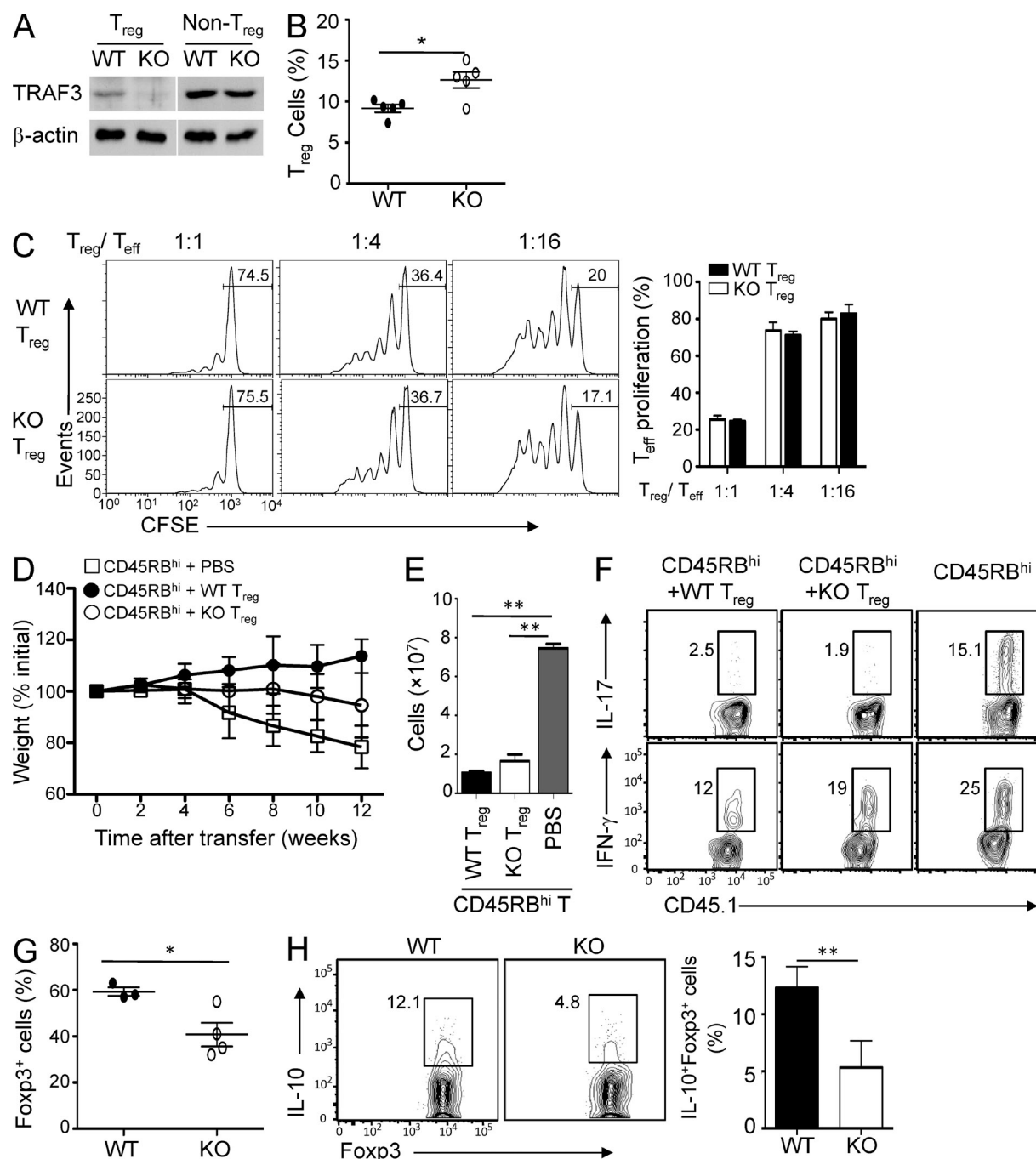


Figure 1. T_{reg} cell-specific TRAF3 ablation does not reduce T_{reg} cell frequency but partially impairs the in vivo function of T_{reg} cells.

(A) T_{reg} (CD4⁺CD25⁺YFP⁺) and non-T_{reg} (CD4⁺CD25⁺YFP[−]) T cells were sorted from the WT-R26^{YFP} (WT) and *Traf3*^{Treg-KO}R26^{YFP} (KO) mice, and TRAF3 expression was assessed by immunoblot. β-Actin served as a loading control. (B) The frequency of Foxp3⁺ T_{reg} cells (among CD3⁺CD4⁺ cells) in the spleen of WT and *Traf3*^{Treg-KO} (KO) mice (6 wk old) was assessed by flow cytometry; data are presented as mean ± SD of five mice per group. Data are representative of five independent experiments. (C) Naive CD4⁺ T cells (T_{eff}) were labeled with CFSE and activated by anti-CD3 plus antigen-presenting cells (irradiated splenocytes from WT mice, depleted of CD3⁺ T cells) in the presence of the indicated ratios of WT or KO T_{reg} cells. Naive CD4⁺ T cell proliferation was measured as dilution of the cytosolic dye CFSE. Data are presented as a representative plot (left) and a summary graph (right) of six mice per genotype in three independent experiments. (D) *Rag1*-KO mice were adoptively transferred with WT B6.SJL CD45RB^{hi} naive CD4⁺ T cells (CD45.1⁺) along with either PBS buffer or sorted T_{reg} cells (CD45.1[−]), and body weight was monitored. (E and F) CD45RB^{hi} CD4⁺ T cells (CD45.1⁺) were transferred into recipient mice as in D (on week 5), and the total number (E) and frequency (F) of Th1 and Th17 cells in the spleen of the recipient mice were assessed by ICS. Eight mice in two different experiments were used for each group. (G and H) The frequency of adoptively transferred Foxp3⁺ T_{reg} cells (G) and IL-10-producing T_{reg} cells (gated on Foxp3⁺ cells) in the spleen of the recipient mice described in D was determined by flow cytometry (5 wk after adoptive transfer; H). (C–E, G, and H) Mean ± SD is shown. Data are representative of two independent experiments. *, P < 0.05; and **, P < 0.01.

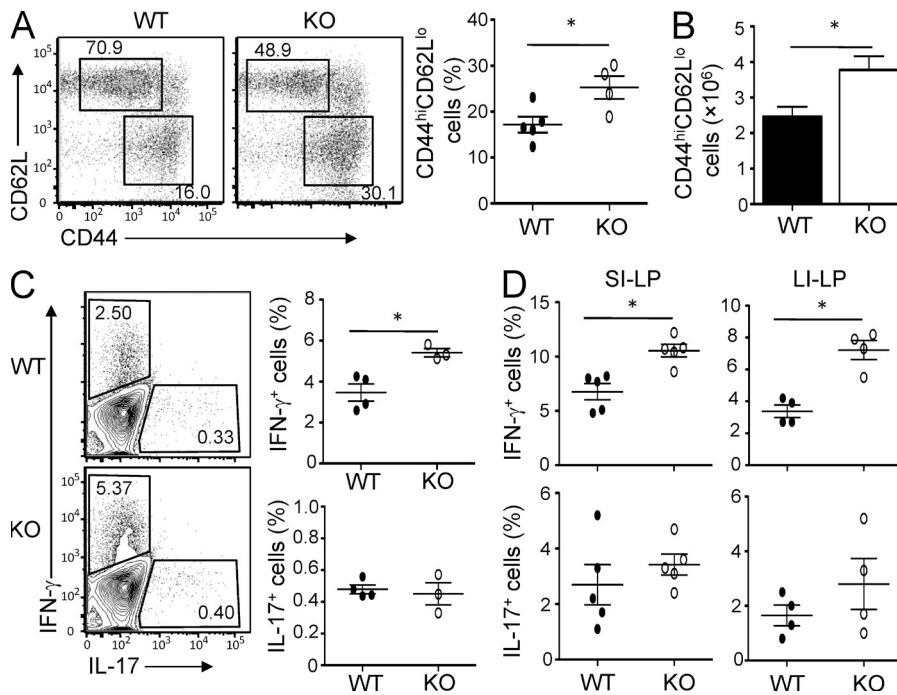


Figure 2. Altered CD4⁺ T cell homeostasis in *Traf3^{Treg-KO}* mice. (A–D) Spleens (A–C; *n* = 4–5) or small and large intestine lamina propria (D; *n* = 6) were harvested from 8-wk-old WT or *Traf3^{Treg-KO}* (KO) mice and analyzed by flow cytometry for the frequency (A) and absolute number (B) of memory-like (CD44^{hi}CD62L^{lo}) CD4⁺ T cells, and the frequency of IL-17- and IFN- γ -producing CD4⁺ T cells (C and D) was assessed using ICS. Mean \pm SD is shown. Data are representative of five independent experiments. *, *P* < 0.05.

in a moderate increase in the frequency of CD4⁺ T cells, but not the CD8⁺ T cells, in the lamina propria of the small and large intestines (not depicted). Among the CD4⁺ T cells, there was a significantly increased frequency of Th1 cells in the lamina propria of *Traf3^{Treg-KO}* mice (Fig. 2 D). Thus, the loss of TRAF3 in T_{reg} cells altered the homeostasis of T cells, a finding which was consistent with the partially compromised function of the TRAF3-deficient T_{reg} cells (Fig. 1, D–F). It is important to note, however, that the overall phenotype of the *Traf3^{Treg-KO}* mice in T cell homeostasis was considerably milder compared with that observed in mutant mice lacking Foxp3 or its major regulators that mediate the development and core functions of T_{reg} cells (Josefowicz et al., 2012). Moreover, the *Traf3^{Treg-KO}* mice only displayed relatively mild tissue inflammation at older ages, mostly seen in the lung and the liver (not depicted). These results suggest that TRAF3 may regulate a specific function, instead of mediating the core suppressive activity, of T_{reg} cells.

T_{reg} cell-specific TRAF3 controls antigen-stimulated humoral immune responses

In addition to maintaining T cell homeostasis and preventing autoimmune diseases, T_{reg} cells play an important role in modulating immune responses to foreign antigens. To examine the role of TRAF3 in mediating this latter function of T_{reg} cells, we analyzed the effect of T_{reg} cell-specific TRAF3 deficiency on the induction of antibodies by well-characterized protein and nonprotein antigens. Upon immunization of a protein antigen, sheep RBCs (SRBCs), the young *Traf3^{Treg-KO}* and WT control mice produced comparable levels of IgM (not depicted). However, the *Traf3^{Treg-KO}* mice produced significantly more IgG and its subtypes (Fig. 3 A). Similar results were

obtained when the mice were immunized with another protein antigen composed of the hapten 4-hydroxy-3-nitrophenylacetyl (NP) conjugated to the carrier protein KLH (NP-KLH; Fig. 3 B). ELISA assays using NP9-BSA (for high affinity) and NP26-BSA (for global affinity) suggested that the T_{reg} cell-specific TRAF3 ablation particularly enhanced the production of high-affinity antibodies (Fig. 3 B and not depicted). In response to immunization by a nonprotein antigen, NP-Ficoll, the production of high-affinity IgG, mainly IgG2b, was only moderately enhanced in the *Traf3^{Treg-KO}* mice (Fig. 3 C).

We also examined the effect of TRAF3 deficiency on the basal level of antibodies in different ages of mice. At a young age, the WT and *Traf3^{Treg-KO}* mice had comparable serum concentrations of antibodies (not depicted). However, older *Traf3^{Treg-KO}* mice (18–20 wk old) had an elevated basal level of serum IgG, particularly IgG1 and IgG2b (Fig. 3 D). These results suggest that expression of TRAF3 in T_{reg} cells is important for controlling the magnitude of humoral immune responses, especially the production of high-affinity IgG antibodies.

To further assess the role of T_{reg} cell-specific TRAF3 in mediating humoral immune responses, we used a model of influenza infection, which is known to trigger strong T cell-dependent antibody responses (Elsner et al., 2012). As expected, the WT mice experienced bodyweight loss after the intranasal infection with the A/PR8 (H1N1) strain of influenza virus (Fig. 3 E). Importantly, under the same infection conditions, the *Traf3^{Treg-KO}* mice had much less bodyweight reduction compared with the WT mice (Fig. 3 E). Moreover, the *Traf3^{Treg-KO}* mice also produced significantly higher levels of antiviral IgG antibodies (Fig. 3 F). These results emphasize the biological significance of the TRAF3-mediated T_{reg} cell regulation.

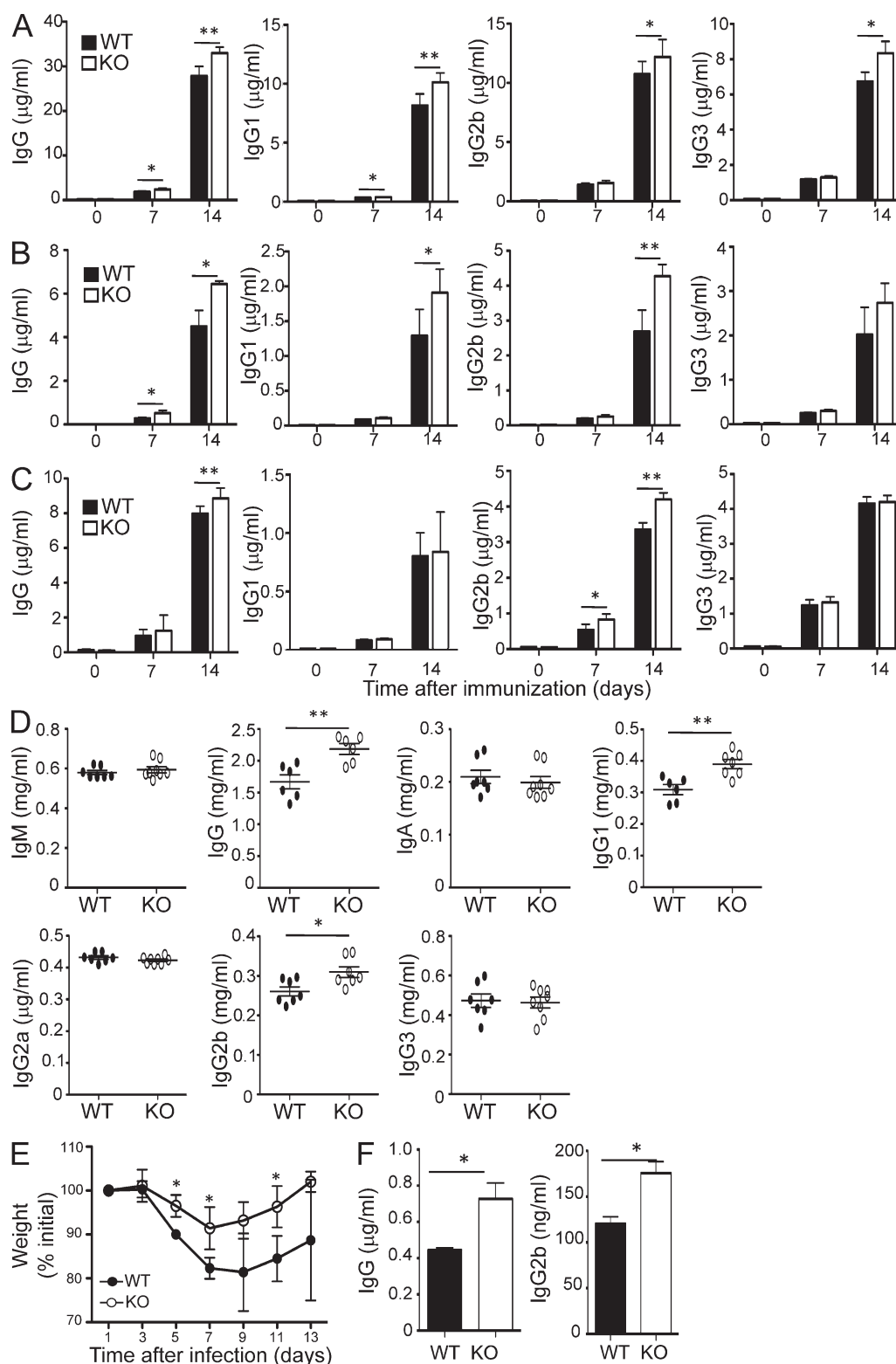


Figure 3. T_{reg} cell-specific TRAF3 controls antigen-stimulated humoral immune responses. (A) WT and *Traf3^{Treg-KO}* mice (8 wk old) were immunized i.p. with SRBCs, and serum SRBC-specific Ig was measured 14 d later by ELISA ($n = 5$). (B and C) WT and *Traf3^{Treg-KO}* mice (6–8 wk old) were immunized i.p. with KLH-NP26 (B) or Ficol-NP26 for 12 d (C), and NP9 (high affinity) Ig was measured 12 d later by ELISA (B: $n = 4$; C: $n = 9$). (D) Basal concentrations of Ig isotypes and IgG subclasses in the sera of 18–20-wk-old WT and *Traf3^{Treg-KO}* mice were measured by ELISA ($n = 7$). (E and F) WT and *Traf3^{Treg-KO}* mice (8 wk old; $n = 10$) were intranasally infected with influenza virus H1N1 and monitored for bodyweight loss (E) and serum anti-H1N1 IgG antibody titer on day 13 (F). (A–F) Mean \pm SD is shown. Data are representative of four (A–D) or two (E and F) independent experiments. *, $P < 0.05$; and **, $P < 0.01$.

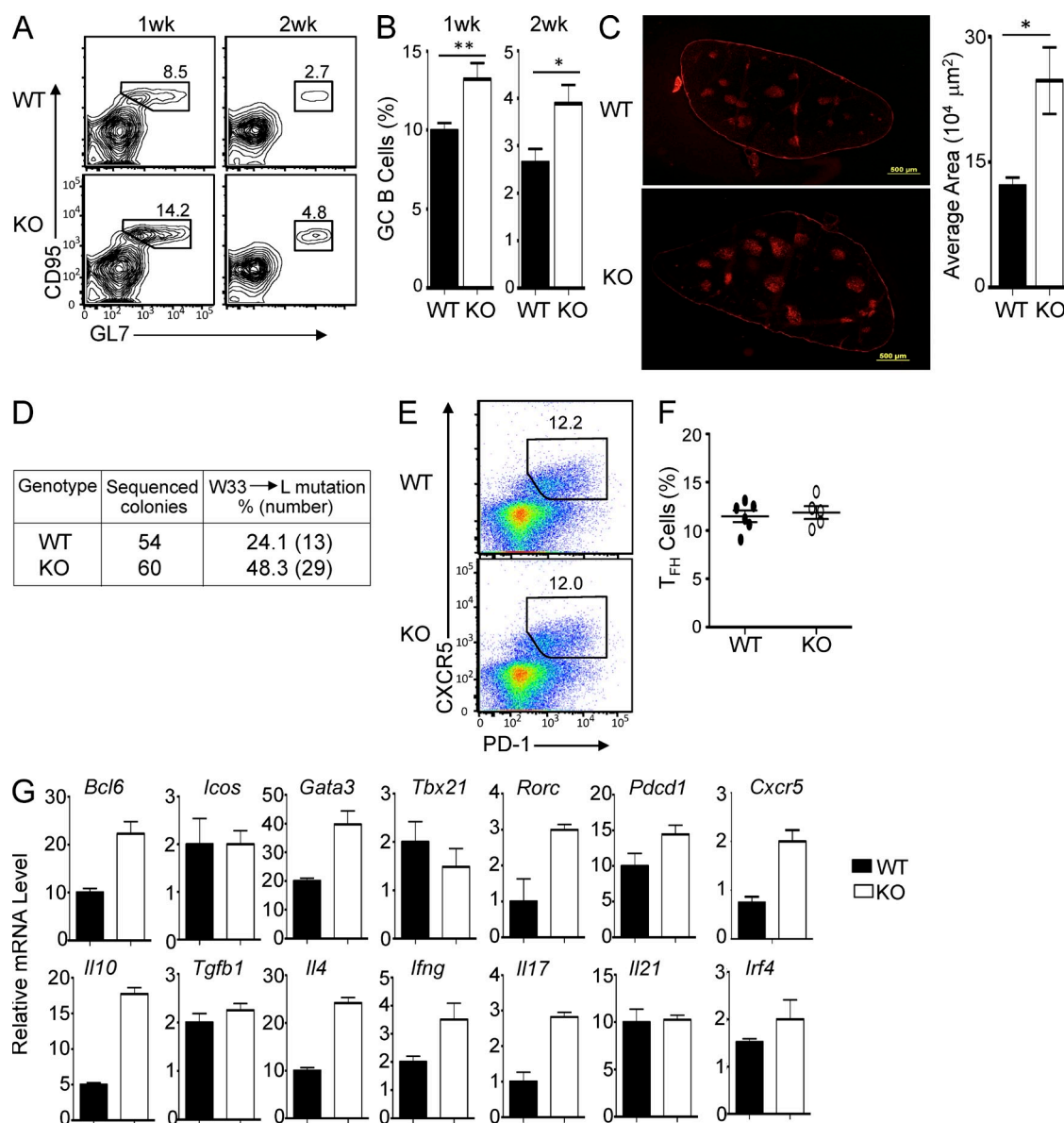


Figure 4. T_{reg} cell-specific TRAF3 regulates T_H cell function and GC formation. (A and B) WT and *Traf3^{Treg-KO}* (KO) mice (8 wk old) were immunized i.p. with SRBCs, and the frequency of GC B cells (CD95⁺GL7⁺) among B220⁺ cells was assessed by flow cytometry. Data are presented as a representative plot (A) and mean \pm SD based on five mice for each group (B). (C) Mice were immunized as in A and B, and GCs were analyzed by immunofluorescence detection of PNA⁺ cells. Graph shows average GC areas as mean \pm SD based on multiple slides. Data are representative of four WT and three *Traf3^{Treg-KO}* (KO) mice. Bars, 500 μ m. (D) Frequency of W33 to L mutation in the GC B cells of SRBC-immunized WT and *Traf3^{Treg-KO}* mice (10 d after immunization), determined by sequencing the cDNA clones constructed using pooled RNA from six WT and six KO mice. (E and F) WT-R26^{YFP} (WT) or *Traf3^{Treg-KO}*R26^{YFP} (KO) mice were immunized as in A, and 10 d later, the frequency of T_H cells (CXCR5⁺PD-1⁺) among CD4⁺YFP⁺ T cells was assessed by flow cytometry. Data are presented as a representative plot (E) and mean \pm SD (F) based on six mice for each group. (G) T_H cells were sorted from the spleens of the WT and KO mice in E and F, and expression of the indicated genes was assessed by RT-PCR. Mean \pm SEM is shown. Data in A–G are representative of three to four independent experiments. *, $P < 0.05$; and **, $P < 0.01$.

T_{reg} cell-specific TRAF3 regulates T_H cell function and GC formation

A hallmark of T cell-dependent antibody responses is the formation of GCs, which are required for various events of the humoral immune response, including antibody class switching, somatic hypermutation, and affinity maturation (Ramiscal and Vinuesa, 2013). Because the T_{reg} cell-specific TRAF3

deficiency preferentially promoted the production of high-affinity antibodies of a major secondary isotype, IgG, we examined the role of TRAF3 in regulating GC formation by flow cytometry, based on the typical surface markers of GC B cells. As expected, immunization of the WT animals with SRBCs induced production of GC B cells, which peaked around 1 wk and declined around 2 wk after the immunization

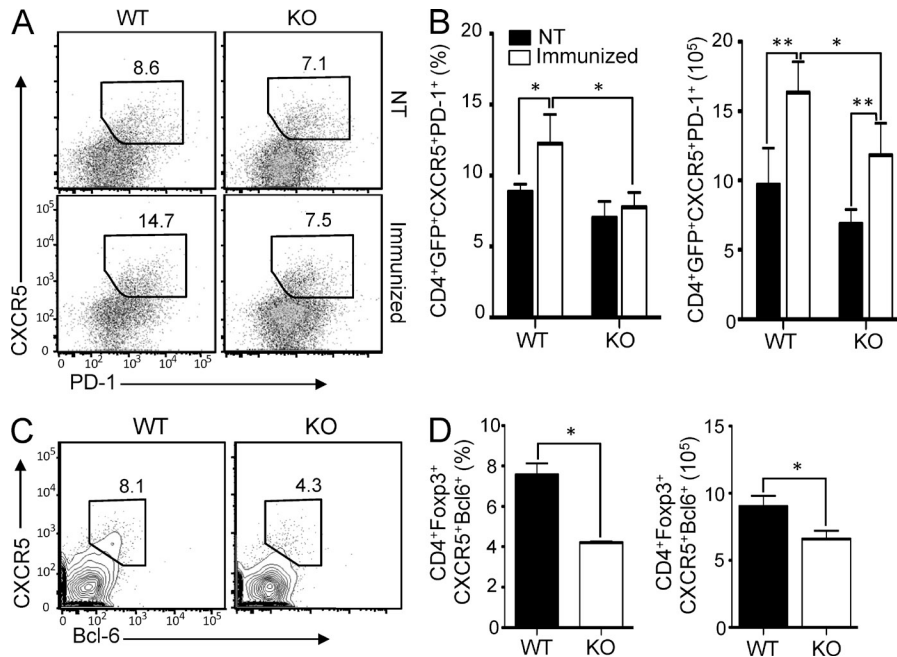


Figure 5. TRAF3 is required for T_{FR} cell induction. (A and B) WT-R26^{YFP} and *Traf3*^{Treg-KO}-R26^{YFP} (KO) mice (8 wk old) were immunized with SRBCs, and 10 d later, the frequency of T_{FR} cells (CXCR5⁺PD-1⁺YFP⁺CD4⁺) in the spleen was assessed by flow cytometry. Data are presented as a representative plot (A) and mean \pm SD (B) based on eight WT and nine KO mice. (C and D) Mice were immunized as in A and B, and the frequency and absolute number of T_{FR} cells was assessed by flow cytometry based on surface staining of CXCR5 and intracellular staining of Bcl-6 within Foxp3⁺CD4⁺ T_{reg} cells. Data are presented as a representative plot (C) and mean \pm SD (D) based on eight WT and nine KO mice. (A–D) Data are representative of three to four independent experiments. *, $P < 0.05$; and **, $P < 0.01$.

(Fig. 4 A). Importantly, the *Traf3*^{Treg-KO} mice produced a markedly higher frequency of GC B cells than the WT mice (Fig. 4, A and B). Parallel immunofluorescence assays also revealed the formation of enlarged GCs in the spleen of the *Traf3*^{Treg-KO} mice after SRBC immunization (Fig. 4 C).

Formation of GCs is associated with antibody somatic hypermutations, a mechanism which generates high-affinity antibodies (Allen et al., 1987; Weiss et al., 1992). Given the enhanced GC formation in *Traf3*^{Treg-KO} mice, we analyzed the antibody somatic hypermutation frequency in the immunized WT and *Traf3*^{Treg-KO} mice based on the tryptophan (W) 33 to leucine (L) hotspot mutation in the Ig heavy chain variable gene V_H186.2 (Allen et al., 1988). Consistent with the elevated GC formation in the *Traf3*^{Treg-KO} mice, these mutant animals had a profoundly higher frequency of W33 to L mutations (Fig. 4 D).

GC formation and antibody class switching are dependent on T_{FH} subtype of CD4⁺ helper T cells. We found that in response to SRBC immunization, the WT and *Traf3*^{Treg-KO} mice produced a comparable frequency of T_{FH} cells (Fig. 4, E and F). Interestingly, however, the T_{FH} cells derived from the *Traf3*^{Treg-KO} mice displayed hyperexpression of genes encoding several cytokine genes, including IL-4, IL-10, IL-17, and IFN- γ (Fig. 4 G). Furthermore, the expression of several transcription factors, such as Bcl-6, Gata-3, and ROR γ t, were also elevated in the T_{FH} cells derived from the immunized *Traf3*^{Treg-KO} mice (Fig. 4 G). Of note, T_{FH} cells are known to produce different effector cytokines depending on the nature of antigens, which appears to influence the antibody class switching in a humoral immune response (Bauquet et al., 2009; Linterman et al., 2012). Several of these cytokines, IL-4, IL-17, and IFN- γ , have been shown to mediate B cell help and induction of antibody class switching toward the generation of different IgG subtypes (Bauquet et al., 2009;

Mitsdoerffer et al., 2010; Linterman et al., 2012). Thus, the perturbed T_{FH} cell activation provided explanations for the aberrant formation of GCs and hyper production of IgG isotypes in *Traf3*^{Treg-KO} mice.

TRAF3 is important for T_{FR} cell induction

Recent studies identified a subset of T_{reg} cells, the T_{FR} cells, which controls the function of T_{FH} cells and GC reactions (Chung et al., 2011; Linterman et al., 2011; Wollenberg et al., 2011). T_{FR} cells are characterized by expression of the chemokine receptor CXCR5, which mediates their migration into the lymphoid follicles (Linterman et al., 2012). In addition, the T_{FR} cells also express high levels of the co-inhibitory molecule PD-1 and the transcription factor Bcl-6, respectively exerting negative and positive roles in T_{FR} regulation (Chung et al., 2011; Linterman et al., 2011; Wollenberg et al., 2011; Sage et al., 2013).

The particularly prominent phenotype of the *Traf3*^{Treg-KO} mice in T_{FH} cell activation and humoral immune responses prompted us to examine the induction and function of T_{FR} cells. We analyzed the T_{FR} cells based on their surface expression of CXCR5 and PD-1 within the population of GFP⁺ (expressed from the Foxp3-GFP-hCre transgene) T_{reg} cells. As expected, the spleens of the WT mice contained a small population of CXCR5⁺PD-1⁺GFP⁺ T_{FR} cells, and this population was significantly increased in response to SRBC immunization (Fig. 5, A and B). Under unimmunized conditions, the T_{FR} frequency of the *Traf3*^{Treg-KO} mice was only moderately lower than that of the WT mice (Fig. 5, A and B). However, these mutant animals were attenuated in antigen-stimulated production of T_{FR} cells after SRBC immunization (Fig. 5, A and B). To further confirm this remarkable result, we stained the T_{FR} cells based on their surface expression of CXCR5

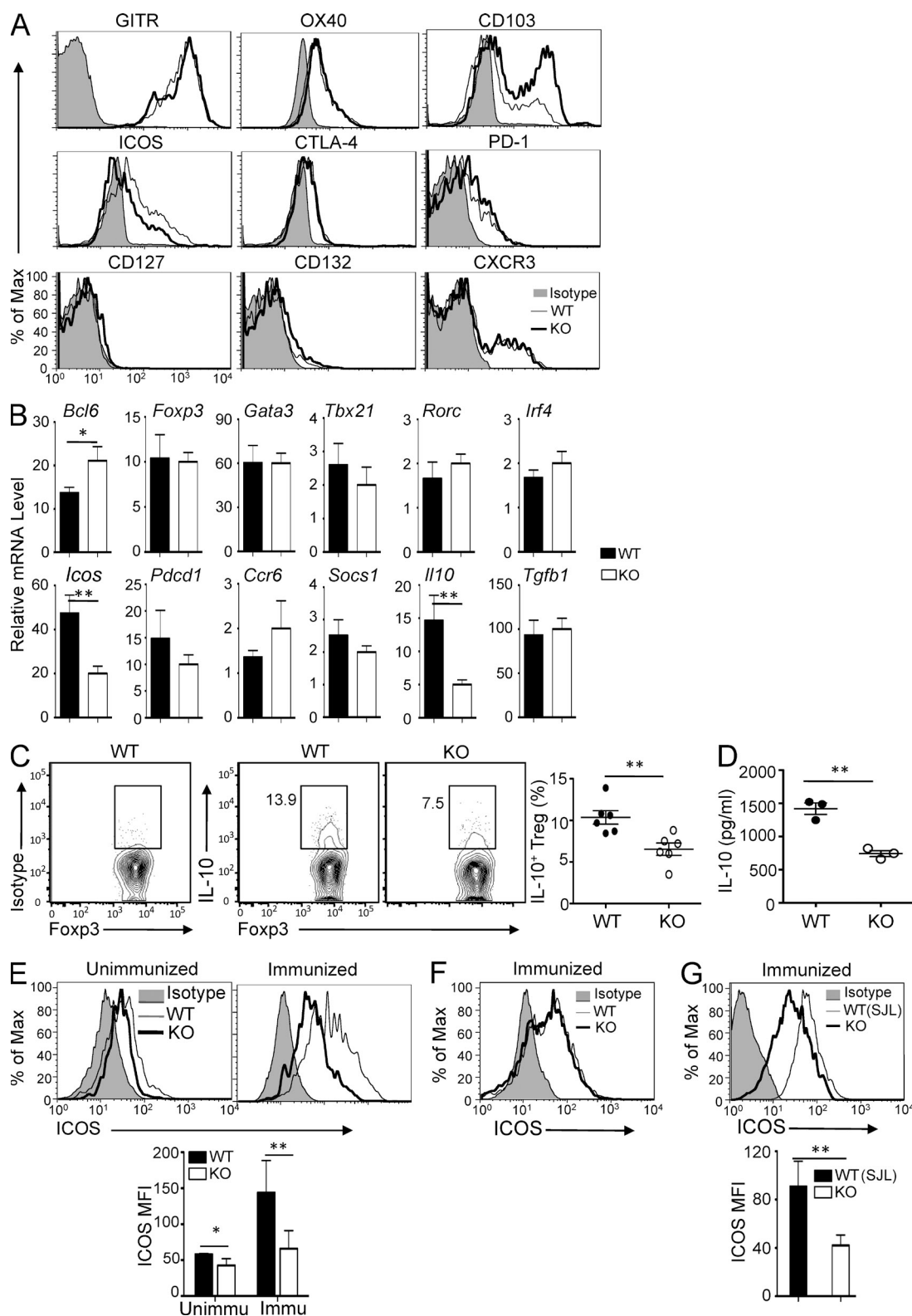


Figure 6. TRAF3 mediates ICOS gene expression via a MAP kinase pathway in T_{reg} cells. (A) Expression of the indicated surface markers on $\text{Foxp3}^+\text{CD4}^+$ T_{reg} cells from the spleens of WT and $\text{Traf3}^{\text{reg-KO}}$ mice (6 wk old) was assessed by flow cytometry. (B) Expression of the indicated genes in T_{reg} cells from 6-wk-old WT or $\text{Traf3}^{\text{reg-KO}}$ (KO) mice was assessed by RT-PCR. Mean \pm SEM is shown. (C) The frequency of IL-10-producing cells among $\text{YFP}^+\text{CD4}^+$ T_{reg} cells from the spleen of WT-R26^{YFP} (WT) and $\text{Traf3}^{\text{reg-KO}}$ -R26^{YFP} (KO) mice was assessed by flow cytometry. Data are presented as a representative plot (left) and the mean \pm SD of six mice for each group. The left panel of C shows the isotype control for IL-10 ICS. (D) $\text{GFP}^+\text{CD25}^+\text{CD4}^+$ T_{reg} cells

and intracellular expression of Bcl-6 and Foxp3. This method once again revealed a defect of the *Traf3*^{Treg-KO} mice in T_{FR} cell production in response to immunization with SRBCs (Fig. 5, C and D). Thus, although TRAF3 is dispensable for the homeostasis of T_{reg} cells, it is important for the induction of a specific subset of T_{reg} cells, the T_{FR} cells, involved in the control of GC formation and humoral immune responses. This finding explains the aberrant induction of GCs and high-affinity antibodies in the *Traf3*^{Treg-KO} mice.

TRAF3 mediates ICOS gene expression in T_{reg} cells

To assess the molecular mechanism by which TRAF3 regulates T_{reg} cell function, we examined the expression of signature molecules on WT and TRAF3-deficient T_{reg} cells. Although the TRAF3 deficiency did not affect the expression of most of the T_{reg} cell surface markers analyzed, it caused an increase in the frequency of CD103^{hi} T_{reg} cell populations (Fig. 6 A). The increase in CD103^{hi} T_{reg} cells might be caused by their elevated activation, as expression of this molecule is known to be associated with effector/memory type T_{reg} cells (Huehn et al., 2004). Interestingly, the TRAF3-deficient T_{reg} cells had a profound reduction in the expression level of ICOS (Fig. 6 A), a co-stimulatory molecule thought to mediate specific T_{reg} cell functions, such as IL-10 gene induction and T_{FR} cell development (Ito et al., 2008; Busse et al., 2012; Redpath et al., 2013; Sage et al., 2013). QPCR analysis further confirmed the defect in *Icos* gene expression (Fig. 6 B). Moreover, the TRAF3-deficient T_{reg} cells were also impaired in the induction of IL-10 expression (Fig. 6, B–D). These findings further suggest the involvement of TRAF3 in the regulation of specific aspects of T_{reg} cell functions.

Because *Traf3*^{Treg-KO} mice had a defect in T_{FR} cell induction, we tested whether TRAF3 was required for antigen-stimulated ICOS expression on T_{FR} cells. As seen with the total T_{reg} cells, ICOS expression was reduced on T_{FR} cells under unimmunized conditions (Fig. 6 E). Importantly, the defect of the TRAF3-deficient T_{FR} cells in ICOS expression became much more drastic after immunization of the mice with the protein antigen SRBCs (Fig. 6 E). Furthermore, this defect appeared to be cell intrinsic because it was not detected in the Foxp3[−] non-T_{reg} cells (Fig. 6 F). A mixed bone marrow adoptive transfer experiment revealed that the TRAF3-deficient T_{reg} cells had reduced ICOS expression even when they were developed in the presence of WT T_{reg} cells in the same recipient mice (Fig. 6 G), thus further suggesting a cell-intrinsic role for TRAF3 in the regulation of ICOS expression in T_{reg} cells.

NIK overexpression does not inhibit ICOS expression

The signaling function of TRAF3 is complex and may vary among cell types (Hildebrand et al., 2011). TRAF3 is known to bind to NIK and mediate NIK degradation, thereby negatively regulating the noncanonical NF-κB signaling (Sun, 2012). Loss of TRAF3 causes accumulation of NIK and constitutive activation of noncanonical NF-κB in B cells and T cells (Liao et al., 2004; He et al., 2006; Xie et al., 2007; Gardam et al., 2008). To examine how TRAF3 regulates ICOS expression, we examined the potential involvement of noncanonical NF-κB activation. We used a transgenic mouse expressing a stabilized form of NIK lacking its TRAF3-binding motif (NIKΔT3) under the control of a loxP-flanked stop cassette (Sasaki et al., 2008). By crossing these mice with the Foxp3-GFP-hCre mice, we generated T_{reg}-conditional NIKΔT3 transgenic (NIKΔT3^{Treg-Tg}) mice. As seen with the *Traf3*^{Treg-KO} mice, the NIKΔT3^{Treg-Tg} mice displayed a moderate increase in memory-like effector T cells (Fig. 7 A). This result suggested that deregulated noncanonical NF-κB activation might partially impair the function of T_{reg} cells. However, the NIKΔT3^{Treg-Tg} mice did not show obvious abnormalities in antibody responses (Fig. 7 B) or reduced expression of ICOS and IL-10 in T_{reg} cells (Fig. 7, C and D). In fact, the level of ICOS was even slightly enhanced in these mutant T_{reg} cells (Fig. 7 C), probably reflecting their abnormal activation. Consistent with this idea, another activation marker, CD103, was also enhanced on the NIKΔT3 T_{reg} cells (Fig. 7 E).

TRAF3-mediated ICOS induction involves activation of ERK and AP1

In conventional T cells, TRAF3 has a role in mediating TCR-stimulated activation of the MAP kinase ERK (Xie et al., 2011). We found that loss of TRAF3 in T_{reg} cells also inhibited the activation of ERK by the TCR and CD28 signals (Fig. 8 A). To test whether attenuated ERK activation contributed to the reduced expression of ICOS in T_{reg} cells, we used a selective ERK inhibitor, U0126. Indeed, the ERK inhibitor severely inhibited the induction of ICOS expression (Fig. 8 B). ICOS promoter contains an AP1-binding site that is important for promoter activation by the TCR/CD28 signals (Watanabe et al., 2012). Consistently, we found that cross-linking the TCR and CD28 in WT T cells led to rapid activation of AP1 that bound to the ICOS AP1 probe (Fig. 8 C). Moreover, the TRAF3 deficiency attenuated the activation of AP1 (Fig. 8 C). These findings suggest that TRAF3 regulates ICOS gene induction via an ERK–AP1 signaling pathway.

were sorted from the spleens of three WT and three KO mice and stimulated for 24 h with PMA and ionomycin. IL-10 secretion was measured by ELISA. (E and F) WT or *Traf3*^{Treg-KO} (KO) mice (6 wk old; *n* = 5) were immunized with SRBCs, and 10 d later, ICOS expression in T_{FR} (E) or T_{HH} (F) cells was assessed by flow cytometry. Graph in E shows the mean fluorescence intensity (MFI) of ICOS based on five mice for each group. (D–F) Mean ± SD is shown. (G) *Rag1*-KO recipient mice were adoptively transferred with 1:1 ratio of mixed bone marrows of WT (B6.SJL, CD45.1⁺) and *Traf3*^{Treg-KO} (KO, CD45.2⁺) mice. 6 wk later, mice were immunized with SRBCs, and ICOS expression on gated WT (CD4⁺CD45.1⁺Foxp3⁺) and KO (CD4⁺CD45.2⁺Foxp3⁺) T_{reg} cells was assessed by flow cytometry at day 10 after immunization. Graph shows MFI as mean ± SD from four mice for each group. Data are representative of three to four (A–F) or two (G) independent experiments. *, *P* < 0.05; and **, *P* < 0.01.

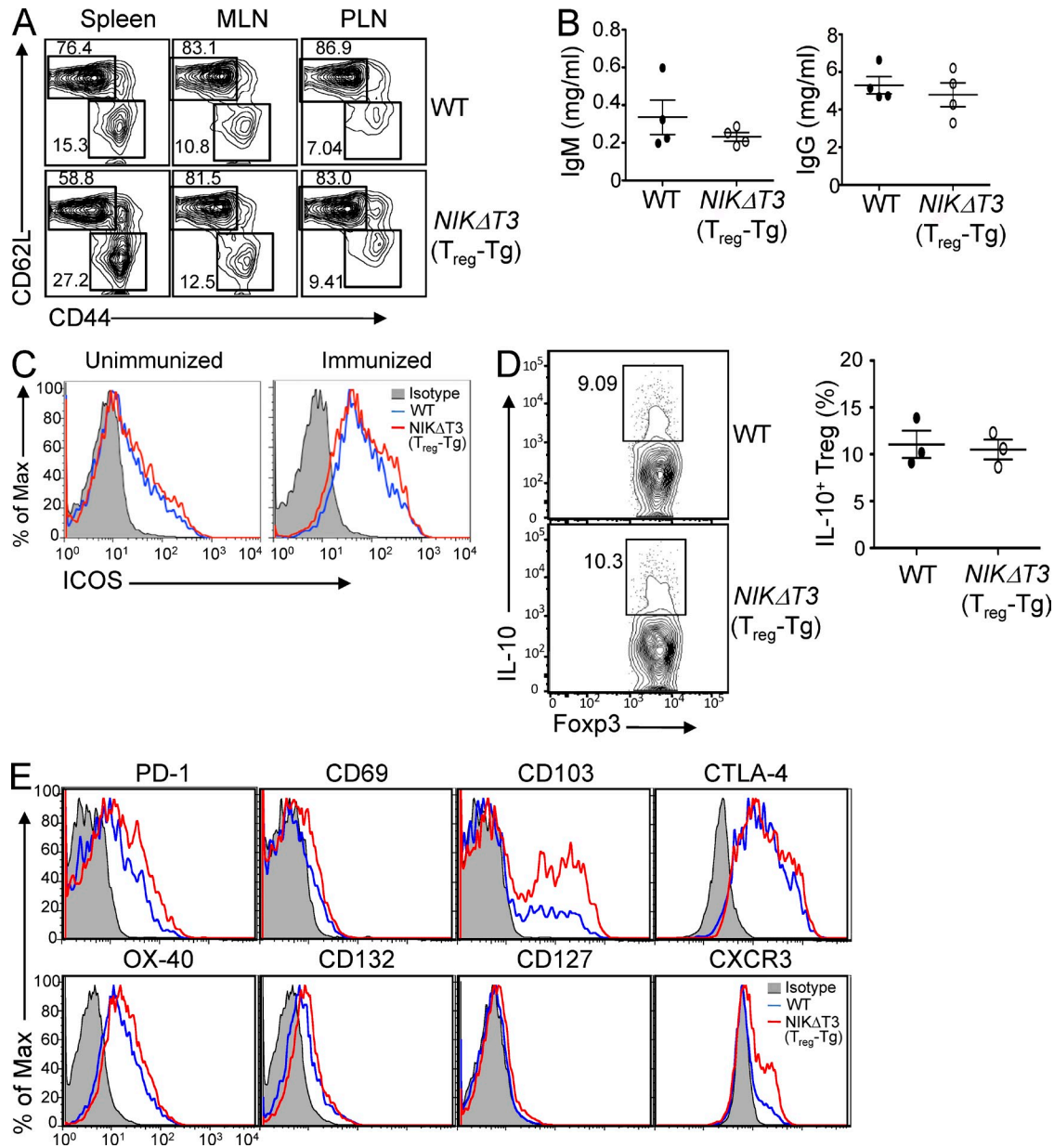


Figure 7. NIK overexpression in T_{reg} cells does not inhibit the expression of ICOS and IL-10 or perturb antibody production. (A) The frequency of memory ($CD44^{hi}CD62L^{lo}$) and naive ($CD44^{lo}CD62L^{hi}$) $CD4^{+}$ T cells in WT and $NIK\Delta T3^{Treg-Tg}$ mice (12 wk old; $n = 4$) was analyzed by flow cytometry. (B) Serum IgM and IgG in unmanipulated WT and $NIK\Delta T3^{Treg-Tg}$ mice (12–16 wk old; $n = 4$) was measured by ELISA. (C) Expression of ICOS in $CD4^{+}Foxp3^{+}$ T cells from WT and $NIK\Delta T3^{Treg-Tg}$ mice (6 wk old; $n = 3$) was assessed by flow cytometry. (D) Frequency of IL-10-producing cells among $GFP^{+}CD4^{+}T_{reg}$ cells from the spleen of WT and $NIK\Delta T3^{Treg-Tg}$ mice (6 wk old; $n = 3$) was measured by ICS. (B and D) Mean \pm SD is shown. (E) Expression of the indicated surface markers on $Foxp3^{+}CD4^{+}T_{reg}$ cells from the spleens of WT and $NIK\Delta T3^{Treg-Tg}$ mice (8 wk old) was assessed by flow cytometry. Data are representative of four independent experiments.

ICOS expression in T_{reg} cells is required for the formation and function of T_{FR} cells

A recent study suggests that *Icos*-KO mice have a defect in T_{FR} cell induction, although it is unclear whether this function is cell intrinsic (Sage et al., 2013). We used a T_{reg} cell adoptive transfer model to examine whether the expression of ICOS in T_{reg} cells is required for the development and function of T_{FR} cells. We adoptively transferred the T cell-deficient

Tcrb/Tcrd double KO (*Tcrb/Tcrd*-dKO) mice with WT naive $CD4^{+}$ T cells together with T_{reg} cells purified from WT, *Traf3^{Treg-KO}*, or *Icos*-KO mice and then challenged the mice with SRBC antigen. The different T_{reg} cells were highly similar in homeostasis after the adoptive transfer (Fig. 9 A). In contrast, although the WT T_{reg} cells efficiently suppressed the induction of GCs in the immunized recipient mice, the TRAF3-deficient T_{reg} cells were largely defective in this function (Fig. 9 B). The

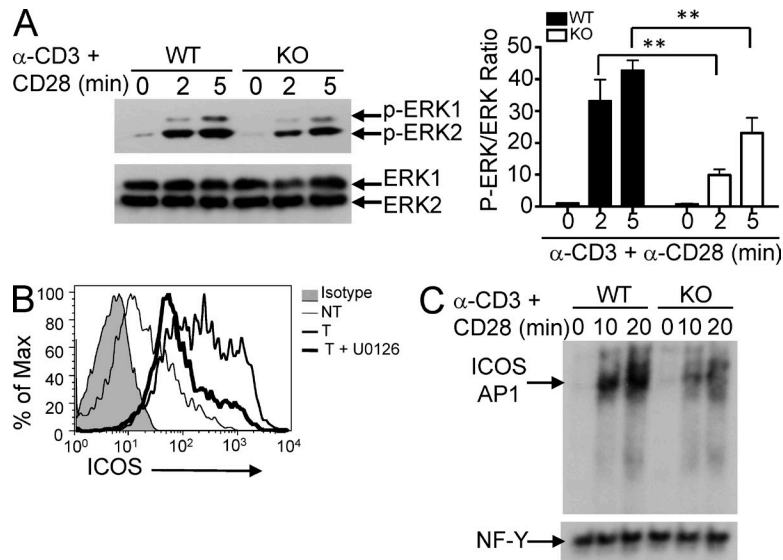


Figure 8. TRAF3 mediates TCR/CD28-stimulated activation of ERK and AP1. (A) T_{reg} cells ($CD4^{+}YFP^{+}CD25^{+}$) were sorted from WT-R26^{YFP} and $Traf3^{Treg-KO}$ -R26^{YFP} mice and stimulated for the indicated time periods with anti-CD3 plus anti-CD28 using a cross-linking method. Levels of total and phosphorylated ERK1,2 were assessed by immunoblot. Data are presented as a representative blot (left) and a summary graph based on quantification of three independent blots (right). Mean \pm SD is shown. (B) ICOS expression on sorted WT T_{reg} cells that were either not treated (NT) or treated with anti-CD3 plus anti-CD28 in the absence (T) or presence (T + U0126) of an ERK inhibitor, 50 μ M U0126, for 24 h was assessed by flow cytometry. (C) Nuclear extracts were prepared from WT or TRAF3-deficient $CD4^{+}$ T cells stimulated with anti-CD3 plus anti-CD28 for the indicated time periods, and EMSA was performed using ICOS AP1 or the control NF- κ B oligonucleotide probes. Data are representative of three independent experiments. **, $P < 0.01$.

similar deficiency was observed with the ICOS-deficient T_{reg} cells (Fig. 9 B).

We next examined the production of high-affinity IgG antibodies in the immunized recipient mice. Consistent with the deficiency of the $Traf3$ -KO and $Icos$ -KO T_{reg} cells in suppressing the GC formation, they also displayed attenuated function in the control of IgG production compared with the WT T_{reg} cells (Fig. 9 C). Moreover, the recipient mice of $Traf3$ -KO and $Icos$ -KO T_{reg} cells contained substantially higher levels of plasma cells (Fig. 9 D) and T_{FH} cells (Fig. 9 E), coupled with reduced frequency of T_{FR} cells (Fig. 9 F). Collectively, these data suggest that TRAF3 and ICOS have a T_{reg} cell-intrinsic role in mediating the generation and function of T_{FR} cells.

DISCUSSION

The $Foxp3^{+}T_{reg}$ cells represent a functionally diverse population composed of subsets that regulate different immune functions (Campbell and Koch, 2011; Josefowicz et al., 2012). The signaling mechanism that regulates the functional diversity of T_{reg} cells is still poorly understood. In the present study, we have identified TRAF3 as a signaling factor that mediates the effector function of T_{reg} cells, particularly their control of GC formation and antibody responses. Our data suggest that TRAF3 is involved in the induction of the recently defined T_{FR} cells, a subset of T_{reg} cells specialized in the control of GC reactions (Chung et al., 2011; Linterman et al., 2011; Wollenberg et al., 2011). Consequently, the mice with T_{reg} cell-specific TRAF3 deficiency display heightened responses to antigens in the formation of GCs and production of high-affinity antibodies.

A recent study suggests that TRAF3 ablation in total T cells, by crossing the $Traf3$ -floxed mice with $CD4$ -Cre mice, causes an increase in the percentage of $Foxp3^{+}T_{reg}$ cells (Xie et al., 2011). Because TRAF3 is knocked out during the double-positive stage of thymocyte development in this

approach, it is thought that TRAF3 may regulate the development of T_{reg} cells (Hildebrand et al., 2011). Our present study revealed that ablation of TRAF3 in committed T_{reg} cells, using the $Foxp3$ -Cre system, also caused a moderate, but significant, increase in the T_{reg} cell frequency. Our finding is consistent with the previous observation and further suggests that TRAF3 may negatively regulate both the early development and the late-stage maturation or survival of T_{reg} cells. Interestingly, despite their increased T_{reg} cell frequency, the $Traf3^{Treg-KO}$ mice had impaired conventional T cell homeostasis, characterized by an increase in the percentage of $CD4^{+}$ T cells with memory/effector surface markers. This result suggests a positive role for TRAF3 in the regulation of T_{reg} cell function. In contrast, the phenotype of the $Traf3^{Treg-KO}$ mice in T cell homeostasis is considerably weaker than that observed in mice lacking $Foxp3$ or other factors required for the development and core functions of T_{reg} cells. The $Traf3^{Treg-KO}$ mice also had only moderate immune cell infiltrations in the nonlymphoid tissues, particularly the lung. Consistently, adoptive transfer experiments revealed that the TRAF3-deficient T_{reg} cells had weakly reduced ability to suppress the expansion and pathogenesis of $CD4^{+}$ T cells. We observed reduced expression of IL-10 in the TRAF3-deficient T_{reg} cells, which may contribute to their partially impaired function in maintaining immune homeostasis.

Despite the relatively weak phenotype in immune homeostasis, the $Traf3^{Treg-KO}$ mice had a prominent abnormality in antigen-stimulated GC reactions. In response to T-dependent antigens, these mutant animals formed enlarged GCs in the spleen and produced markedly more GC B cells, coupled with hyper production of high-affinity IgG subtypes. Gene expression analyses suggest the aberrant activation of T_{FH} cells. Of particular interest is the elevated production of various effector cytokines, including IL-4, IL-10, IL-17, and IFN- γ , by the T_{FH} cells derived from the immunized $Traf3^{Treg-KO}$ mice. Production of these cytokines by normal T_{FH} cells has been observed

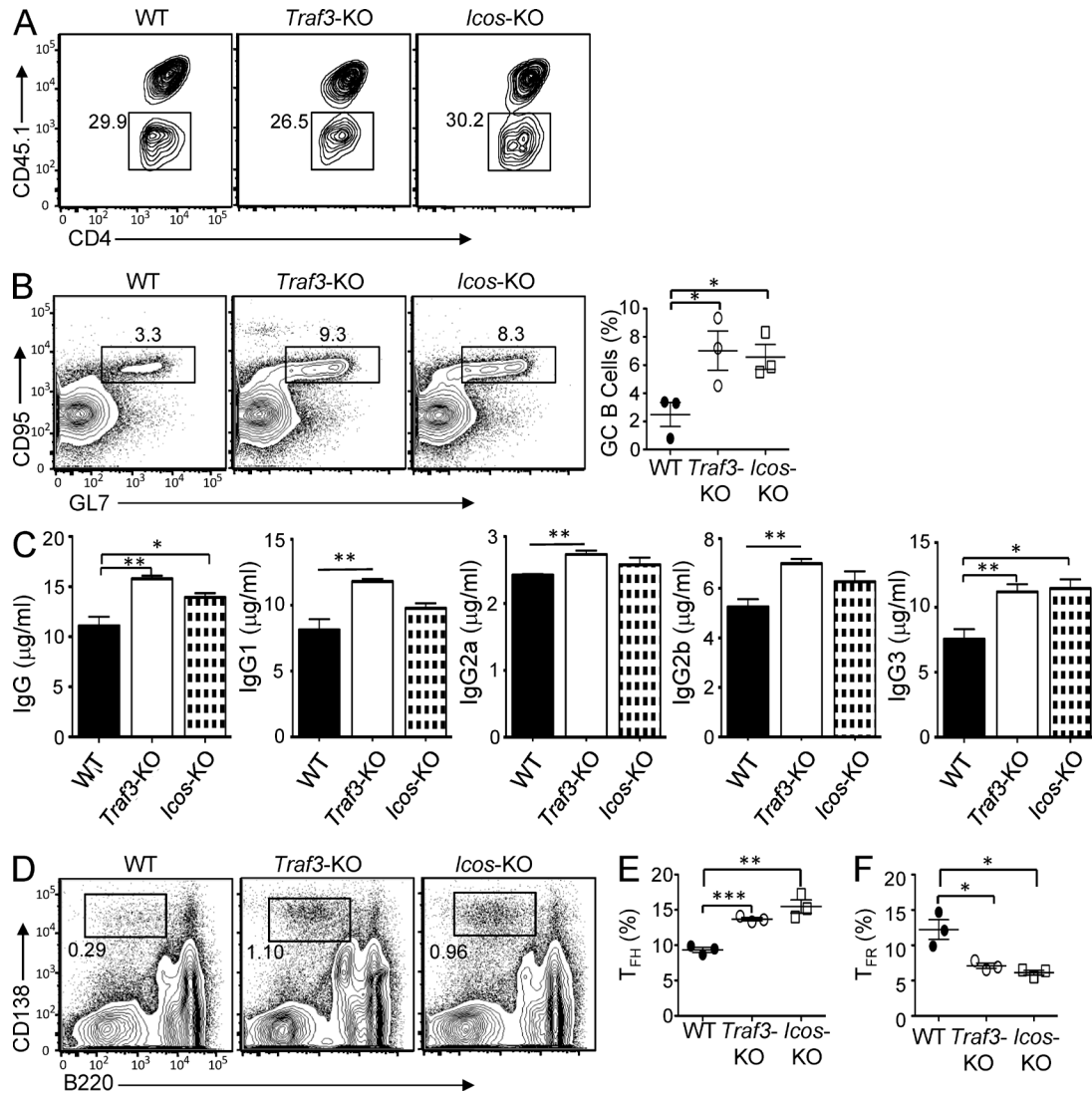


Figure 9. ICOS is essential for controlling T_{FH} cell function and GC formation. Sorted naive CD4⁺ T cells (CD4⁺CD62L^{hi}CD44^{lo}CD25⁻) from WT B6.SJL mice (5 wk old; CD45.1⁺) and sorted T_{reg} T cells (CD4⁺YFP⁺CD25⁺) from WT, *Traf3*^{Treg-KO} (*Traf3*-KO), or *Icos*-KO mice (6 wk old; CD45.2⁺) were mixed in a 5:1 ratio and intravenously transferred into *Tcrb*/*Tcrd*-dKO mice. 2 d later, recipient mice were immunized with SRBCs and sacrificed for experiments 14 d after immunization. (A) Frequency of T_{reg} cells (CD45.1⁺) and naive CD4⁺ T cells (CD45.1⁺) in the spleen of *Tcrb*/*Tcrd*-dKO recipients was assessed by flow cytometry. (B) Frequency of GC B cells (GL7⁺CD95⁺) among B220⁺ cells was assessed by flow cytometry. Data are presented as a representative plot (left) and mean \pm SD (right) based on three mice for each group. (C) SRBC-specific antibody levels in the sera of *Tcrb*/*Tcrd*-dKO recipient mice transferred with WT, *Traf3*-KO, and *Icos*-KO T_{reg} cells was assessed by ELISA. Mean \pm SD is shown. (D) Frequency of plasma cells (B220⁻CD138⁺) in the spleens of the *Tcrb*/*Tcrd*-dKO recipients was assessed by flow cytometry. (E and F) Frequency of the T_{FH} (CXCR5⁺PD-1⁺Foxp3⁻CD4⁺) cells among CD4⁺Foxp3⁻ T cells (E) and the frequency of T_{FR} (CXCR5⁺PD-1⁺GFP⁺CD4⁺) cells among CD4⁺Foxp3⁺ T_{reg} cells (F) were assessed by flow cytometry. Data are presented as mean \pm SD based on three mice for each group and are representative of two independent experiments. *, $P < 0.05$; **, $P < 0.01$; and ***, $P < 0.001$.

previously and thought to regulate B cell proliferation and antibody class switching (Rousset et al., 1992; King et al., 2008; Bauquet et al., 2009; Mitsdoerffer et al., 2010). Thus, deregulated production of these effector cytokines by T_{FH} cells may contribute to the heightened GC formation and antibody responses in the *Traf3*^{Treg-KO} mice. The aberrant T_{FH} cell activation was apparently caused by the defect of these mutant animals in producing T_{FR} cells. Upon immunization with a T-dependent antigen, the WT mice had a substantial increase in the T_{FR} cells, whereas the *Traf3*^{Treg-KO} mice were severely

attenuated in this response. In an adoptive transfer model, the TRAF3-deficient T_{reg} cells also displayed a severe defect in generating T_{FR} cells and suppressing GC responses. Under the transfer conditions, the TRAF3-deficient T_{reg} cells also had significantly reduced ability to suppress the production of T_{FH} cells. These results suggest that TRAF3 may regulate a signaling pathway in T_{reg} cells that is particularly important for their conversion into T_{FR} cells during an immune response.

The generation of T_{FR} cells from Foxp3⁺ T_{reg} cells is critically dependent on the transcription factor Bcl-6 (Chung et al.,

2011; Linterman et al., 2011; Wollenberg et al., 2011). Our data suggested that TRAF3 is not required for expression of Bcl-6 or the various T_{reg} cell signature molecules. Instead, TRAF3 appeared to be required for maintaining the high-level expression of ICOS in T_{reg} cells because the TRAF3 deficiency greatly reduced, although did not completely block, the expression of ICOS at both RNA and protein levels. By using an adoptive transfer approach, we obtained in vivo evidence that ICOS expression in T_{reg} cells is crucial for T_{reg} cell-mediated suppression of GC formation and antibody responses. Like the TRAF3-deficient T_{reg} cells, the ICOS-deficient T_{reg} cells were severely attenuated in the generation of T_{FR} cells and suppression of GC induction in response to immunization. These findings provide a mechanistic insight into the function of TRAF3 in regulating T_{FR} cell production and antibody responses. We believe that ICOS induction is an important, but probably not the only, mechanism by which TRAF3 regulates T_{FR} cell induction and antibody responses.

The signaling function of TRAF3 is complex and differs in different cell types and in the context of different receptors (Hildebrand et al., 2011). One important function of TRAF3 is to mediate degradation of NIK and, thereby, negatively regulate the noncanonical NF- κ B signaling (Liao et al., 2004). This negative signaling function of TRAF3 is particularly important for maintaining normal homeostasis and function of B cells, although its role in other cell types remains unclear (He et al., 2006; Xie et al., 2007; Gardam et al., 2008). Our data suggest that the activation of noncanonical NF- κ B might contribute to the moderate defect of the TRAF3-deficient T_{reg} cells in maintaining CD4⁺ T cell homeostasis because perturbed CD4⁺ T cell homeostasis was also detected in mice with conditional expression of stable form of NIK (NIK Δ T3^{Treg-Tg} mice). However, the noncanonical NF- κ B activation is unlikely responsible for the functional defect of the TRAF3-deficient T_{reg} cells in the regulation of GC reactions. Unlike the TRAF3 deficiency, conditional expression of NIK Δ T3 in T_{reg} cells did not cause hyperproduction of IgG or other antibody isotypes. The NIK Δ T3-expressing T_{reg} cells did not show any defect in ICOS expression either. Instead, our data suggest a positive role for TRAF3 in mediating the TCR signaling in T_{reg} cells. As seen in conventional T cells (Xie et al., 2011), the loss of TRAF3 in T_{reg} cells resulted in attenuated activation of the MAP kinase ERK. We obtained evidence that ERK is important for TCR-stimulated ICOS expression in T_{reg} cells.

In summary, we have identified TRAF3 as a signaling factor that mediates the effector function of T_{reg} cells, particularly in the control of humoral immune responses. Although TRAF3 is dispensable for the homeostasis of T_{reg} cells, it is crucial for antigen-stimulated production of T_{FR} cells. Our data suggest that the T_{reg} cell regulatory function of TRAF3 involves induction of the co-stimulatory molecule ICOS, which is the result of impaired ERK activation. Our study has also revealed the requirement of T_{reg} cell-specific ICOS in the induction of T_{FR} cells and the control GC responses. These findings not only establish a novel role of TRAF3 in the regulation of

T_{reg} cell function and humoral immune responses, but also shed new light onto the signaling mechanism regulating the specific functions of T_{reg} cells.

MATERIALS AND METHODS

Mice. Foxp3-GFP-hCre BAC transgenic mice (Zhou et al., 2008; The Jackson Laboratory) were backcrossed for nine generations to the C57BL/6 background and then crossed with *Traf3*-floxed mice (C57BL/6 background; Gardam et al., 2008) to produce age-matched *Traf3*^{+/+}Foxp3^{GFP-hCre} (termed WT) and *Traf3*^{fl/fl}Foxp3^{GFP-hCre} (termed *Traf3*^{Treg-KO}) mice. In some experiments, these mice were further crossed with the Rosa26-YFP Cre reporter (termed R26^{YFP}; C57BL/6J background; The Jackson Laboratory) to generate WT and *Traf3*^{Treg-KO} mice that express YFP in their T_{reg} cells (termed WT-R26^{YFP} and *Traf3*^{Treg-KO}R26^{YFP} mice, respectively). The *Traf3*-floxed mice were also crossed with CD4-Cre (C57BL/6 background; The Jackson Laboratory) mice to produce mice harboring TRAF3 deletion in total T cells (called *Traf3*^{T^{all}-KO} mice). NIK Δ T3 mice (C57BL/6 background; The Jackson Laboratory) express a stabilized form of NIK lacking the TRAF3-binding motif (NIK Δ T3) from the Rosa26 locus under the control of a loxP-flanked stop cassette (Sasaki et al., 2008). These mice were crossed with the Foxp3-GFP-hCre mice (backcrossed to C57BL/6 background) to generate T_{reg} -conditional NIK Δ T3 transgenic (NIK Δ T3^{Treg-Tg}) and internal WT control mice. B6.SJL (expressing the CD45.1 congenic marker), *Tcrb*/*Tcrd*-dKO, *Icos*-KO, and *Rag1*-KO mice (all in C57BL/6 background) were obtained from the Jackson Laboratory. For all experiments, WT littermates were used as controls. Mice were maintained in a specific pathogen-free facility of the University of Texas MD Anderson Cancer Center, and all animal experiments were performed in accordance with protocols approved by the Institutional Animal Care and Use Committee of the University of Texas MD Anderson Cancer Center.

Cell preparation and flow cytometry analysis. Mononuclear cells were isolated from the spleen and intestinal lamina propria as previously described (Reiley et al., 2006; Chang et al., 2012). T_{reg} cells were purified by flow cytometric cell sorting based on their expression of CD25 and the YFP marker from WT-R26^{YFP} or *Traf3*^{Treg-KO}R26^{YFP} mice. Flow cytometric analyses and cell sorting were performed (Reiley et al., 2006) using a FACSCalibur (BD) and FACSARIA (BD), respectively. For intracellular cytokine staining (ICS), cells were stimulated with 50 ng/ml PMA plus 750 ng/ml ionomycin for 4–6 h in the presence of 10 μ g/ml monensin, and the fixed cells were incubated with the indicated antibodies and subjected to flow cytometry. FITC-conjugated anti-CD95 (BD); PE-conjugated anti-PD-1, anti-CD138, anti-Bcl-6, anti-CTLA4, and anti-CXCR3 (BD); allophycocyanin (APC)-conjugated anti-GL7 and anti-CXCR5 (BD Bioscience); and PE-Cy7-conjugated anti-CD8 and anti-CD4 (eBioscience) were used. Other antibodies were described previously (Chang et al., 2012).

Mouse immunization. Age-matched WT and *Traf3*^{Treg-KO} mice (6–8 wk old) were immunized i.p. with 2×10^9 SRBCs (Cocalico Biologicals), 100 μ l NP-KLH (1 mg/ml), or 100 μ l NP-Ficoll (1 mg/ml) and sacrificed at the indicated times for analyzing serum antibody concentration and GC formation.

Influenza viral infection. WT and *Traf3*^{Treg-KO} mice were subjected to intranasal infection with a nonlethal dose (25 tissue culture ID₅₀ units in 25 μ l PBS per mouse) of influenza virus A/PR8 (H1N1) under isoflurane anesthesia. Body weight change was monitored every other day for 13 d. On day 13, influenza-specific antibodies in the serum were detected by ELISA as described previously (Elsner et al., 2012). In brief, ELISA plates were coated with influenza virus overnight at 4°C, blocked with 1% BSA in PBS, and then loaded with serum samples prediluted in 1% BSA. After 3 h of incubation, the plates were washed three times with PBST buffer, and the bound antibody was detected by with biotinylated goat anti-mouse antibody and streptavidin-HRP using TMB as substrate.

Histology and GC analysis. Organs were removed from sacrificed mice, fixed in 10% neutral buffered formalin, embedded in paraffin, and sectioned for hematoxylin-eosin staining. For GC formation analysis, SRBC-immunized mice were sacrificed after 10 d of immunization. Frozen spleen sections were fixed in methanol/acetone (2:1) for 10 min, followed by blocking for 30 min in a biotin- and serum-free SuperBlock buffer (Thermo Fisher Scientific). The GCs were detected using biotinylated peanut agglutinin (Vector Laboratories) followed by Alexa Fluor 594-conjugated streptavidin (Molecular Probes). The sections were mounted using an anti-quenching agent (Vectashield; Vector Laboratories) and analyzed under a fluorescent microscope (DP70; Olympus). Panoramic pictures were taken and the GCs counted. The area and perimeter of each GC from each mouse ($n = 3$) were obtained using ImageJ software (National Institutes of Health). The area and perimeter are expressed in micrometers. GC B cells were analyzed by flow cytometry after staining with FITC-conjugated anti-CD95, PE-conjugated anti-B220, and APC-conjugated anti-GL7, and plasma B cells were analyzed similarly by staining with FITC-conjugated anti-B220 and PE-conjugated anti-CD138. For detecting T_{FH} cells, the cells were stained with FITC-conjugated anti-CD4, PE-conjugated PD-1, and APC-conjugated CXCR5, followed by permeabilization with a Foxp3 staining kit (eBioscience) and intracellular staining with PE-conjugated anti-Bcl-6. T_{FH} cells were detected similarly except the inclusion of intracellular staining with FITC-conjugated anti-Foxp3 or the GFP marker.

ELISA. For SRBC or NP-specific antibody detection, Nunc Immuno Plate MaxiSorp plates (Thermo Fisher Scientific) were coated with SRBC lysate, NP9-BSA, or NP26-BSA and incubated overnight at 4°C. After blocking with 1% BSA in PBS, the plates were incubated with serially diluted standard or samples and then with HRP-conjugated detection antibodies. After colorimetric reaction (tetramethylbenzidine; Moss), the absorbance at 450 nm was measured using an ELISA plate reader. For IL-10 detection, Nunc plates were coated with 1 µg/ml anti-IL-10 capture antibody in 50 mM sodium bicarbonate and incubated overnight at 4°C. The coated plates were incubated with supernatant of the T_{reg} cell culture and subjected to colorimetric detection as described above.

Immunoblot and real-time quantitative RT-PCR. Purified T_{reg} and CD4⁺T cells were lysed in RIPA buffer supplemented with inhibitors of phosphatases and the proteases. For analyzing ERK phosphorylation, the cells were stimulated with agonistic anti-CD3 and anti-CD28 antibodies using a cross-linking method (Reiley et al., 2007) before lysis. The cell lysates were fractionated by SDS-PAGE and subjected to immunoblot assays with the indicated antibodies. For analyzing RNA expression, total cellular RNA was isolated and subjected to real-time quantitative RT-PCR assays as previously described (Chang et al., 2011). The gene-specific primer sets are listed in Table S1.

Electrophoretic mobility shift assay (EMSA). Nuclear extract preparation and EMSA were performed as described previously (Ganchi et al., 1992) using ³²P-radiolabeled oligonucleotide probes. The probes used were mouse ICOS AP1, 5'-TTCATCCATCTAGTCATTTCATTCACGCATC-3'; and NF- κ B, 5'-AAGAGATTAACCAATCACGTACGGTCT-3'.

In vitro and in vivo T_{reg} cell suppression assays. The in vitro T_{reg} cell suppression assay was performed as previously described (Chang et al., 2012). In vivo T_{reg} cell assays were performed essentially as described previously (Chang et al., 2012). For examining the in vivo roles of T_{reg} cells in the regulation of GC reactions, sorted CD4⁺CD62L^{hi}CD44^{lo}CD25⁻ naive T cells from B6.SJL mice (5–6 wk old) and sorted CD4⁺GFP⁺CD25⁺ T_{reg} cells from WT, *Traf3*^{reg-KO}, and *Icos*-KO mice (5–6 wk old) were intravenously transferred into *Tcrb*/*Tcrd*-dKO mice. Recipient mice were immunized with SRBC 2 d after adoptive transfer and sacrificed 14 d later for analyzing serum antibodies and lymphocyte populations.

Antibody somatic hypermutation analyses. WT and *Traf3*^{reg-KO} mice were immunized with SRBCs and sacrificed after 10 d for isolating GC B cells

by flow cytometric cell sorting based on the B220⁺CD95⁺GL7⁺ surface markers. Somatic hypermutation was analyzed based on the W33 to L hot-spot mutation, essentially as previously described (Muramatsu et al., 2000). In brief, V_H186.2 transcripts were amplified by PCR using the V_H186.2 (5'-GCTGTATCATGCTCTCTTG-3') and CH γ -1 (5'-GGTGCTATCCGGTC-CCTGAGT-3') primer pairs, and the PCR products were inserted into the pGEM-T vector by TA cloning. Randomly picked cDNA clones were sequenced for identification of the W33 to L mutations.

Statistical analysis. Prism software (GraphPad Software) was used for two-tailed unpaired Student's *t* tests. P-values of <0.05 or <0.01 were considered significant and very significant, respectively.

Online supplemental material. Table S1 lists the gene-specific primers used for real-time RT-PCR analyses. Online supplemental material is available at <http://www.jem.org/cgi/content/full/jem.20131019/DC1>.

We thank the Centenary Institute of Cancer Medicine and Cell Biology for TRAF3-floxed mice. We also thank the personnel from the Flow Cytometry, DNA Analysis, Histology, and Genetically Engineered Mouse core facilities at the University of Texas MD Anderson Cancer Center for their technical assistance.

This study was supported by grants from National Institutes of Health (AI057555, AI064639, GM84459, and AI104519 to S.-C. Sun and CA131207 to S.E. Ullrich) and partially supported by a Sister Institution Network Fund and a seed fund from the Center for Inflammation and Cancer at the University of Texas MD Anderson Cancer Center.

The authors have no conflicting financial interests.

Author contributions: J.-H. Chang and H. Hu designed and performed most of the experiments, prepared the figures, and wrote part of the manuscript; J. Jin performed the histology experiment; N. Puebla-Osorio performed the GC immunofluorescence staining experiment; Y. Xiao provided technical help; R. Brink contributed the *Traf3*-floxed mice; B.E. Gilbert contributed the influenza virus; S.E. Ullrich was involved in supervision of N. Puebla-Osorio; and S.-C. Sun supervised the work and wrote the manuscript.

Submitted: 16 May 2013

Accepted: 3 December 2013

REFERENCES

- Allen, D., A. Cumano, R. Dildrop, C. Kocks, K. Rajewsky, N. Rajewsky, J. Roes, F. Sablitzky, and M. Siekevitz. 1987. Timing, genetic requirements and functional consequences of somatic hypermutation during B-cell development. *Immunol. Rev.* 96:5–22. <http://dx.doi.org/10.1111/j.1600-065X.1987.tb00506.x>
- Allen, D., A. Cumano, T. Simon, F. Sablitzky, and K. Rajewsky. 1988. Modulation of antibody binding affinity by somatic mutation. *Int. J. Cancer Suppl.* 41:1–8. <http://dx.doi.org/10.1002/ijc.2910410802>
- Bauquet, A.T., H. Jin, A.M. Paterson, M. Mitsdoerffer, I.C. Ho, A.H. Sharpe, and V.K. Kuchroo. 2009. The costimulatory molecule ICOS regulates the expression of c-Maf and IL-21 in the development of follicular T helper cells and TH-17 cells. *Nat. Immunol.* 10:167–175. <http://dx.doi.org/10.1038/ni.1690>
- Busse, M., M. Krech, A. Meyer-Bahlburg, C. Hennig, and G. Hansen. 2012. ICOS mediates the generation and function of CD4⁺CD25⁺Foxp3⁺ regulatory T cells conveying respiratory tolerance. *J. Immunol.* 189:1975–1982. <http://dx.doi.org/10.4049/jimmunol.1103581>
- Campbell, D.J., and M.A. Koch. 2011. Phenotypic and functional specialization of FOXP3⁺ regulatory T cells. *Nat. Rev. Immunol.* 11:119–130. <http://dx.doi.org/10.1038/nri2916>
- Chang, J.H., Y. Xiao, H. Hu, J. Jin, J. Yu, X. Zhou, X. Wu, H.M. Johnson, S. Akira, M. Pasparakis, et al. 2012. Ubc13 maintains the suppressive function of regulatory T cells and prevents their conversion into effector-like T cells. *Nat. Immunol.* 13:481–490. <http://dx.doi.org/10.1038/ni.2267>
- Chang, M., W. Jin, J.H. Chang, Y. Xiao, G.C. Brittain, J. Yu, X. Zhou, Y.H. Wang, X. Cheng, P. Li, et al. 2011. The ubiquitin ligase Peli1 negatively regulates T cell activation and prevents autoimmunity. *Nat. Immunol.* 12:1002–1009. <http://dx.doi.org/10.1038/ni.2090>

- Chung, Y., S. Tanaka, F. Chu, R.I. Nurieva, G.J. Martinez, S. Rawal, Y.H. Wang, H. Lim, J.M. Reynolds, X.H. Zhou, et al. 2011. Follicular regulatory T cells expressing Foxp3 and Bcl-6 suppress germinal center reactions. *Nat. Med.* 17:983–988. <http://dx.doi.org/10.1038/nm.2426>
- Elsner, R.A., D.N. Ernst, and N. Baumgarth. 2012. Single and coexpression of CXCR4 and CXCR5 identifies CD4 T helper cells in distinct lymph node niches during influenza virus infection. *J. Virol.* 86:7146–7157. <http://dx.doi.org/10.1128/JVI.06904-11>
- Ganchi, P.A., S.-C. Sun, W.C. Greene, and D.W. Ballard. 1992. I κ B/MAD-3 masks the nuclear localization signal of NF- κ B p65 and requires the transactivation domain to inhibit NF- κ B p65 DNA binding. *Mol. Biol. Cell.* 3:1339–1352. <http://dx.doi.org/10.1091/mbc.3.12.1339>
- Gardam, S., F. Sierro, A. Basten, F. Mackay, and R. Brink. 2008. TRAF2 and TRAF3 signal adapters act cooperatively to control the maturation and survival signals delivered to B cells by the BAFF receptor. *Immunity.* 28:391–401. <http://dx.doi.org/10.1016/j.immuni.2008.01.009>
- Ha, H., D. Han, and Y. Choi. 2009. TRAF-mediated TNFR-family signaling. *Curr. Protoc. Immunol.* Chapter 11:Unit 11.9D.
- He, J.Q., B. Zarnegar, G. Oganessian, S.K. Saha, S. Yamazaki, S.E. Doyle, P.W. Dempsey, and G. Cheng. 2006. Rescue of TRAF3-null mice by p100 NF- κ B deficiency. *J. Exp. Med.* 203:2413–2418. <http://dx.doi.org/10.1084/jem.20061166>
- Hildebrand, J.M., Z. Yi, C.M. Buchta, J. Poovassery, L.L. Stunz, and G.A. Bishop. 2011. Roles of tumor necrosis factor receptor associated factor 3 (TRAF3) and TRAF5 in immune cell functions. *Immunol. Rev.* 244:55–74. <http://dx.doi.org/10.1111/j.1600-065X.2011.01055.x>
- Huehn, J., K. Siegmund, J.C. Lehmann, C. Siewert, U. Haubold, M. Feuerer, G.F. Debes, J. Lauber, O. Frey, G.K. Przybylski, et al. 2004. Developmental stage, phenotype, and migration distinguish naive- and effector/memory-like CD4⁺ regulatory T cells. *J. Exp. Med.* 199:303–313. <http://dx.doi.org/10.1084/jem.20031562>
- Ito, T., S. Hanabuchi, Y.H. Wang, W.R. Park, K. Arima, L. Bover, F.X. Qin, M. Gilliet, and Y.J. Liu. 2008. Two functional subsets of FOXP3⁺ regulatory T cells in human thymus and periphery. *Immunity.* 28:870–880. <http://dx.doi.org/10.1016/j.immuni.2008.03.018>
- Josefowicz, S.Z., L.F. Lu, and A.Y. Rudensky. 2012. Regulatory T cells: mechanisms of differentiation and function. *Annu. Rev. Immunol.* 30:531–564. <http://dx.doi.org/10.1146/annurev.immunol.25.022106.141623>
- King, C., S.G. Tangye, and C.R. Mackay. 2008. T follicular helper (TFH) cells in normal and dysregulated immune responses. *Annu. Rev. Immunol.* 26:741–766. <http://dx.doi.org/10.1146/annurev.immunol.26.021607.090344>
- Liao, G., M. Zhang, E.W. Harhaj, and S.C. Sun. 2004. Regulation of the NF- κ B-inducing kinase by tumor necrosis factor receptor-associated factor 3-induced degradation. *J. Biol. Chem.* 279:26243–26250. <http://dx.doi.org/10.1074/jbc.M403286200>
- Linterman, M.A., W. Pierson, S.K. Lee, A. Kallies, S. Kawamoto, T.F. Rayner, M. Srivastava, D.P. Divekar, L. Beaton, J.J. Hogan, et al. 2011. Foxp3⁺ follicular regulatory T cells control the germinal center response. *Nat. Med.* 17:975–982. <http://dx.doi.org/10.1038/nm.2425>
- Linterman, M.A., A. Liston, and C.G. Vinuesa. 2012. T-follicular helper cell differentiation and the co-option of this pathway by non-helper cells. *Immunol. Rev.* 247:143–159. <http://dx.doi.org/10.1111/j.1600-065X.2012.01121.x>
- MacDonald, T.T., I. Monteleone, M.C. Fantini, and G. Monteleone. 2011. Regulation of homeostasis and inflammation in the intestine. *Gastroenterology.* 140:1768–1775. <http://dx.doi.org/10.1053/j.gastro.2011.02.047>
- Mitsdoerffer, M., Y. Lee, A. Jäger, H.J. Kim, T. Korn, J.K. Kolls, H. Cantor, E. Bettelli, and V.K. Kuchroo. 2010. Proinflammatory T helper type 17 cells are effective B-cell helpers. *Proc. Natl. Acad. Sci. USA.* 107:14292–14297. <http://dx.doi.org/10.1073/pnas.1009234107>
- Muramatsu, M., K. Kinoshita, S. Fagarasan, S. Yamada, Y. Shinkai, and T. Honjo. 2000. Class switch recombination and hypermutation require activation-induced cytidine deaminase (AID), a potential RNA editing enzyme. *Cell.* 102:553–563. [http://dx.doi.org/10.1016/S0092-8674\(00\)00078-7](http://dx.doi.org/10.1016/S0092-8674(00)00078-7)
- Ramiscal, R.R., and C.G. Vinuesa. 2013. T-cell subsets in the germinal center. *Immunol. Rev.* 252:146–155. <http://dx.doi.org/10.1111/immr.12031>
- Redpath, S.A., N. van der Werf, A.M. Cervera, A.S. MacDonald, D. Gray, R.M. Maizels, and M.D. Taylor. 2013. ICOS controls Foxp3(+) regulatory T-cell expansion, maintenance and IL-10 production during helminth infection. *Eur. J. Immunol.* 43:705–715. <http://dx.doi.org/10.1002/eji.201242794>
- Reiley, W.W., M. Zhang, W. Jin, M. Losiewicz, K.B. Donohue, C.C. Norbury, and S.C. Sun. 2006. Regulation of T cell development by the deubiquitinating enzyme CYLD. *Nat. Immunol.* 7:411–417. <http://dx.doi.org/10.1038/ni1315>
- Reiley, W.W., W. Jin, A.J. Lee, A. Wright, X. Wu, E.F. Tewalt, T.O. Leonard, C.C. Norbury, L. Fitzpatrick, M. Zhang, and S.C. Sun. 2007. Deubiquitinating enzyme CYLD negatively regulates the ubiquitin-dependent kinase Tak1 and prevents abnormal T cell responses. *J. Exp. Med.* 204:1475–1485. <http://dx.doi.org/10.1084/jem.20062694>
- Rousset, F., E. Garcia, T. Defrance, C. Péronne, N. Vezzio, D.H. Hsu, R. Kastelein, K.W. Moore, and J. Banchereau. 1992. Interleukin 10 is a potent growth and differentiation factor for activated human B lymphocytes. *Proc. Natl. Acad. Sci. USA.* 89:1890–1893. <http://dx.doi.org/10.1073/pnas.89.5.1890>
- Sage, P.T., L.M. Francisco, C.V. Carman, and A.H. Sharpe. 2013. The receptor PD-1 controls follicular regulatory T cells in the lymph nodes and blood. *Nat. Immunol.* 14:152–161. <http://dx.doi.org/10.1038/ni.2496>
- Sakaguchi, S., T. Yamaguchi, T. Nomura, and M. Ono. 2008. Regulatory T cells and immune tolerance. *Cell.* 133:775–787. <http://dx.doi.org/10.1016/j.cell.2008.05.009>
- Sasaki, Y., D.P. Calado, E. Derudder, B. Zhang, Y. Shimizu, F. Mackay, S. Nishikawa, K. Rajewsky, and M. Schmidt-Suppran. 2008. NIK overexpression amplifies, whereas ablation of its TRAF3-binding domain replaces BAFF:BAFF-R-mediated survival signals in B cells. *Proc. Natl. Acad. Sci. USA.* 105:10883–10888. <http://dx.doi.org/10.1073/pnas.0805186105>
- Sun, S.C. 2012. The noncanonical NF- κ B pathway. *Immunol. Rev.* 246:125–140. <http://dx.doi.org/10.1111/j.1600-065X.2011.01088.x>
- Watanabe, M., S. Nakajima, K. Ohnuki, S. Ogawa, M. Yamashita, T. Nakayama, Y. Murakami, K. Tanabe, and R. Abe. 2012. AP-1 is involved in ICOS gene expression downstream of TCR/CD28 and cytokine receptor signaling. *Eur. J. Immunol.* 42:1850–1862. <http://dx.doi.org/10.1002/eji.201141897>
- Weiss, U., R. Zobebelein, and K. Rajewsky. 1992. Accumulation of somatic mutants in the B cell compartment after primary immunization with a T cell-dependent antigen. *Eur. J. Immunol.* 22:511–517. <http://dx.doi.org/10.1002/eji.1830220233>
- Wollenberg, I., A. Agua-Doce, A. Hernández, C. Almeida, V.G. Oliveira, J. Faro, and L. Graca. 2011. Regulation of the germinal center reaction by Foxp3⁺ follicular regulatory T cells. *J. Immunol.* 187:4553–4560. <http://dx.doi.org/10.4049/jimmunol.1101328>
- Xie, P., L.L. Stunz, K.D. Larison, B. Yang, and G.A. Bishop. 2007. Tumor necrosis factor receptor-associated factor 3 is a critical regulator of B cell homeostasis in secondary lymphoid organs. *Immunity.* 27:253–267. <http://dx.doi.org/10.1016/j.immuni.2007.07.012>
- Xie, P., Z.J. Kraus, L.L. Stunz, Y. Liu, and G.A. Bishop. 2011. TNF receptor-associated factor 3 is required for T cell-mediated immunity and TCR/CD28 signaling. *J. Immunol.* 186:143–155. <http://dx.doi.org/10.4049/jimmunol.1000290>
- Zhou, X., L.T. Jeker, B.T. Fife, S. Zhu, M.S. Anderson, M.T. McManus, and J.A. Bluestone. 2008. Selective miRNA disruption in T reg cells leads to uncontrolled autoimmunity. *J. Exp. Med.* 205:1983–1991. <http://dx.doi.org/10.1084/jem.20080707>

SUPPLEMENTAL MATERIAL

Chang et al., <http://www.jem.org/cgi/content/full/jem.20131019/DC1>**Table S1.** The gene-specific primers used for real-time RT-PCR analyses

Gene	Sequence
<i>Foxp3</i>	5'-TTCGAGGAGCCAGAAGAGTTTC-3' 5'-GGGCCTTGCCCTTTCTCATC-3'
<i>Tbx21</i>	5'-GCCAGGGAACCGCTTATATG-3' 5'-GACGATCATCTGGGTACATTGT-3'
<i>Gata3</i>	5'-GAGGTGGTGTCTGCATTCCAA-3' 5'-TTTCACAGCACTAGAGACCCTGTTA-3'
<i>Rorc</i>	5'-CAAGTCATCTGGGATCCACTAC-3' 5'-TGCAGGAGTAGGCCACATTACA-3'
<i>Socs1</i>	5'-GAGTGGTTGTGGAGGGTGAGA-3' 5'-AGACACAAGCTGCTACAACCAG-3'
<i>Cxcr5</i>	5'-ACTCCTTACCACAGTGCACCTT-3' 5'-GGAAACGGGAGGTGAACCA-3'
<i>Il10</i>	5'-CCAGAGCCACATGCTCCTAGA-3' 5'-GGTCCTTTGTTTGAAAGAAAGTCTTC-3'
<i>Il21</i>	5'-ATCCTGAACTTCTATCAGCTCCAC-3' 5'-GCATTTAGCTATGTGCTTCTGTTC-3'
<i>Il4</i>	5'-CGCCATGCACGGAGATG-3' 5'-CGAGCTACTCTCTGTGGTGTT-3'
<i>Tgfb</i>	5'-GCTCTTGTGACAGCAAAGATAACAA-3' 5'-CGCCCCGACGTTTGG-3'
<i>Ifnb</i>	5'-CAGCAACAGCAAGGCGAAA-3' 5'-CTGGACCTGTGGTTGTTGAC-3'
<i>Icos</i>	5'-TGACCCACCTCCTTTTCAAG-3' 5'-TTAGGGTCATGCACACTGGA-3'
<i>Bcl6</i>	5'-TGAGAAGCCCTATCCCTGTG-3' 5'-TGTGACGGAATGCAGGTTA-3'
<i>Il17</i>	5'-AGCGATGGTGGATGGCTCATGGTTAG-3' 5'-AGCTTTCCCTCCGATTGACACAG-3'
<i>Irf4</i>	5'-CCCCACAGAGCCAAGCATAAGGT-3' 5'-AGGGAGCGCCGTGGTGAGCA-3'
<i>Pdcd1</i>	5'-CGTCCCTCAGTCAAGAGGAG-3' 5'-GTCCCTAGAAGTGCCCAACA-3'
<i>Ccr6</i>	5'-TTGAATGGCAGACACTCACAG-3' 5'-GGAGCCTGGATAACCACTGA-3'
<i>Actb</i>	5'-CGTGAAAAGATGACCCAGATCA-3' 5'-CACAGCCTGGATGGCTACGT-3'